

RURAL BROADBAND INSIGHTS FOR CLOSING THE DIGITAL DIVIDE



WITH PARTNER JONATHAN CHAMBERS

Co-ops Connect FYI

By Jonathan Chambers • Oct 04, 2024

Smart Brevity® count: 0.5 mins...74 words

The Aftermath of Hurricane Helene



This week's edition shares photos of the power and devastation of Hurricane Helene. Our thoughts are with the communities impacted and the electric cooperatives that are working to rebuild and restore power and broadband service for the members and communities they serve.



Sep 30 2021 at 11:2:38 AM
N 29.842636° W 81.308585°
312 SE Wolfe Rd
Lafayette County
Feeder 104 pole# 147333

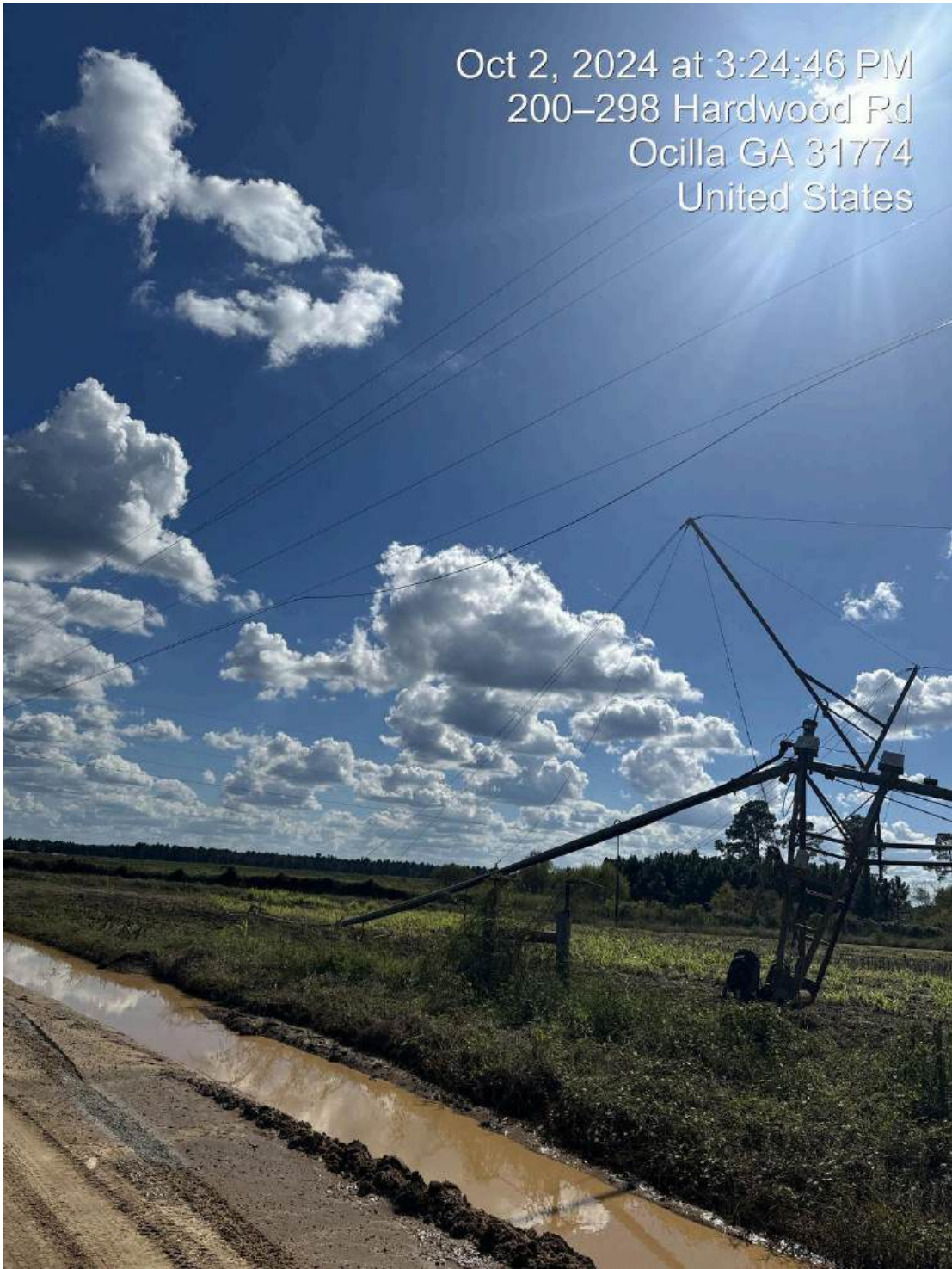
ROAD
CLOSED



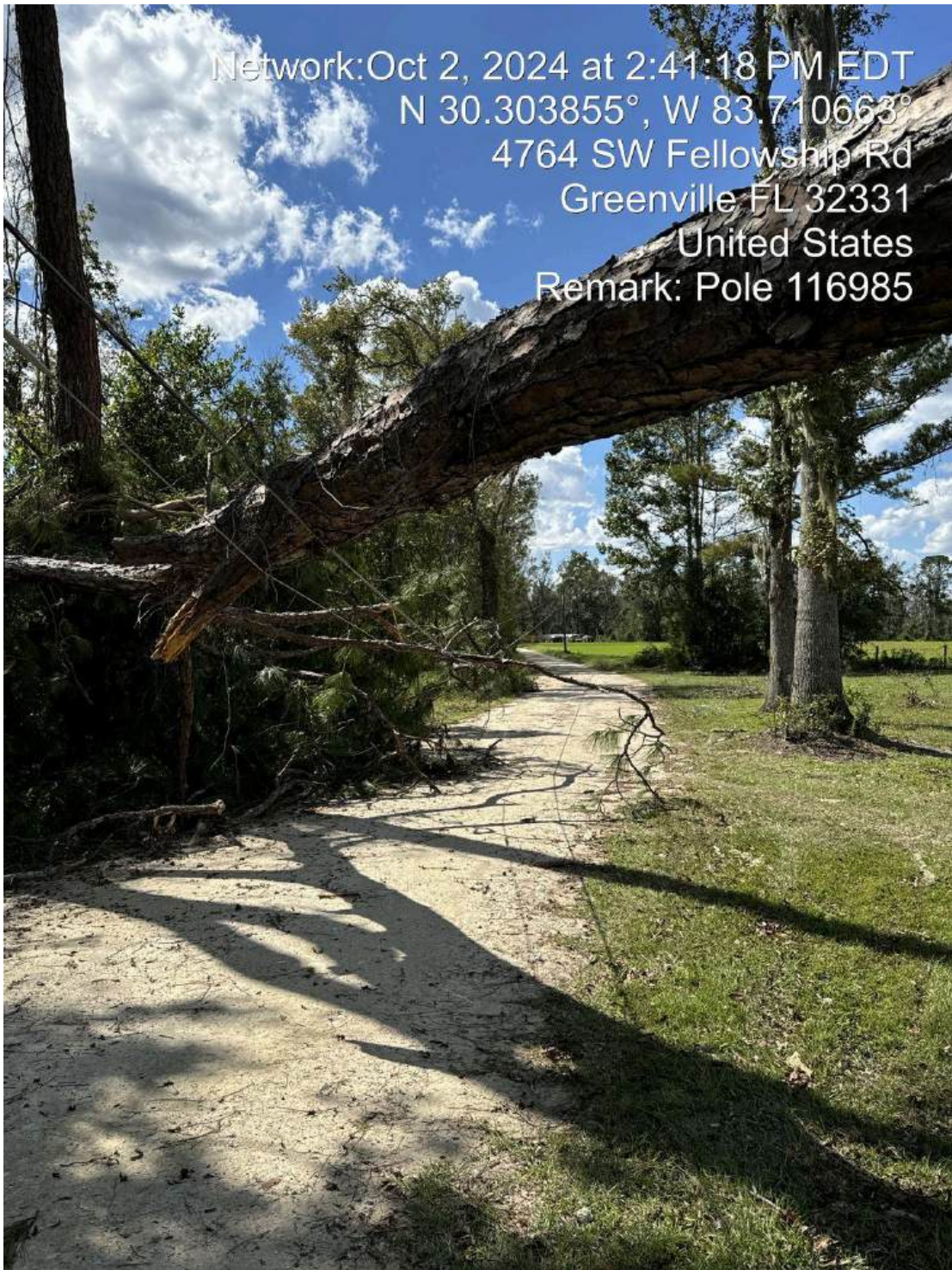
Oct 2, 2024 at 2:45:05 PM
N 31° 26' 36", W 82° 22' 22"
135-169 John Allen Cir
Alma GA 31510
United States



Oct 2, 2024 at 3:24:46 PM
200-298 Hardwood Rd
Ocilla GA 31774
United States

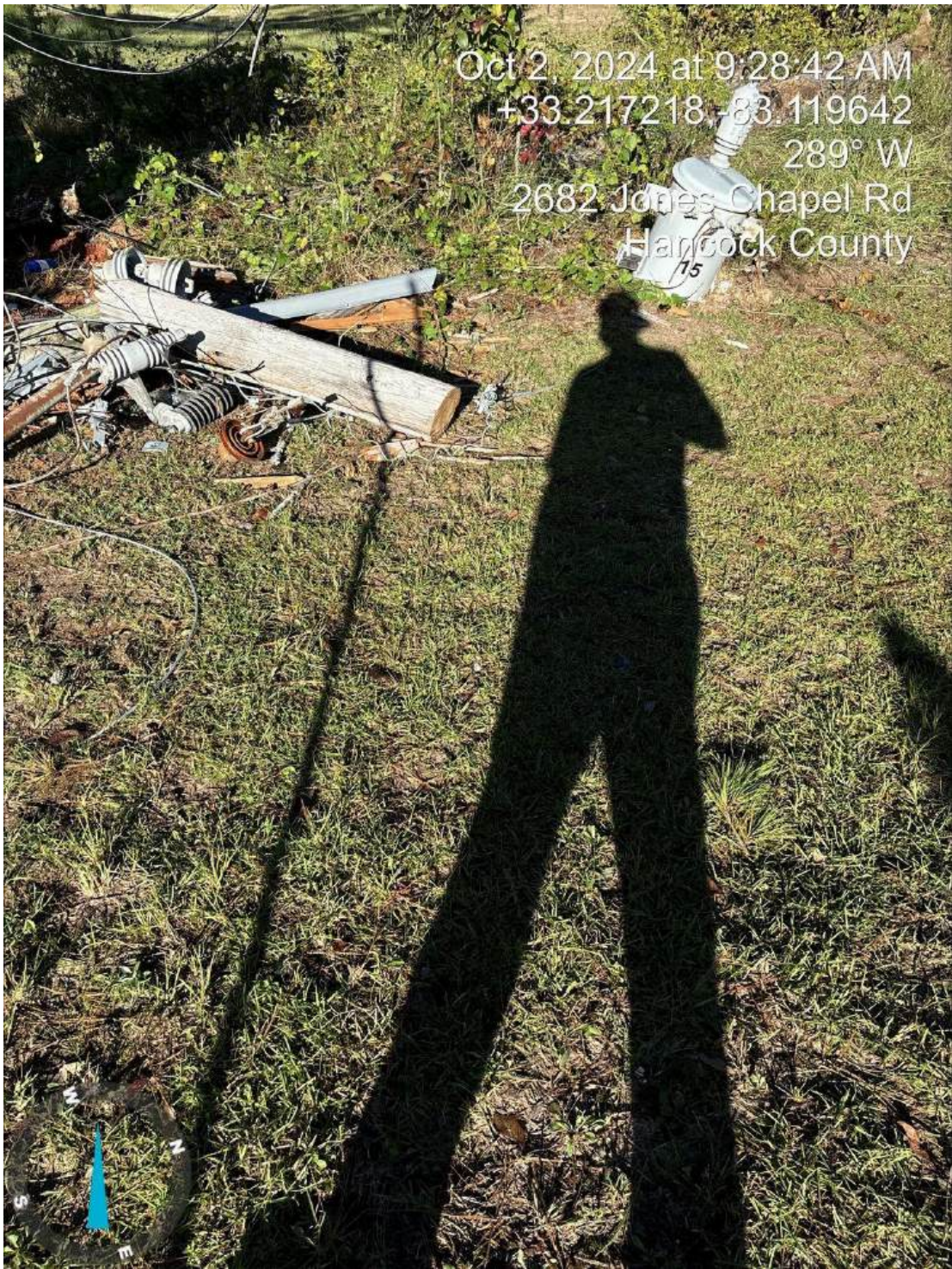


Network: Oct 2, 2024 at 2:41:18 PM EDT
N 30.303855°, W 83.710663°
4764 SW Fellowship Rd
Greenville FL 32331
United States
Remark: Pole 116985



Network: Oct 2, 2024 at 10:32:18 AM EDT
Local: Oct 2, 2024 at 10:32:18 AM EDT
N 33° 2' 15.876" W 82° 43' 25.267"
1221-1405 Kittrell Creek Rd
Sandersville GA 31082
United States





Feel free to forward this **Co-ops Connect FYI** to colleagues who want to stay in the know on all things broadband! Subscribe to Conexon's weekly newsletter [here](#).

Powered by

AXIOS HQ

